

Western Polymers Ltd.

Wescan Precision Machine

Western Polymers Ltd.

*TUFF KOTE*

*ROD COUPLINGS*



## THE TUFF-KOTE HIGH PERFORMANCE DIFFERENCE

The production of deviated, heavy oil, directional and high sand content wells are operations where high performance is expected from both crews and equipment.

The Tuff-Kote line of sucker rod couplers and tubing collars is a high performance product engineered by oilfield professionals and progressive cavity pumping specialists to minimize rod coupler and tubing wear.

Tuff-Kote couplers are polyurethane or rubber coated to minimize tubing wear in operating wells. Tuff-Kote durability and reliability are the result of:

- Using only premium quality elastomers which maximize abrasion resistance, cut and tear strength and chemical resistance.
- The use of high quality API rolled thread steel couplers
- Stringent quality control in our 8-step manufacturing process
- An exclusive bonding procedure that ensures maximum pli strength by using a combination of chemical and mechanical processes.

### Regular Service Couplers

Part Number	Size	OD	Steel Type
TK1	7/8"	1.96"	7/8" x 6" Slim Hole
TK2	1"	2.25"	1" x 6" Slim Hole
TK3	3/4"	1.96"	3/4" x 6" Regular
TK4	1 1/8"	2.55"	1 1/8" x 6" Regular
TK1M	7/8"	1.96"	7/8" x 4" Regular
TK2M	1"	2.25"	1" x 4" Regular
TK1MSH	7/8"	1.84"	7/8" x 4" Slim Hole



\*Slim Hole Mini's will fit the drift of 2.375" tubing with 0.167" wall thickness and an ID of 2.041" only.

Benefits of running 4" couplings:

- Reduces the amount of surface area at each joint that restricts flow up the tubing.
- Having a smaller coupling reduces the pressure drop at each joint which in turn helps to keep any sand suspended within the production fluids



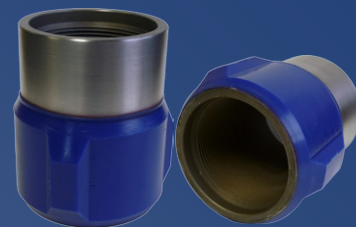
### Extreme Service Couplers

Part Number	Size	OD	Steel Type
XTK1	7/8"	1.96"	7/8" x 6" Slim Hole
XTK2	1"	2.25"	1" x 6" Slim Hole
XTK3	3/4"	1.96"	3/4" x 6" Regular
XTK4	1 1/8"	2.55"	1 1/8" x 6" Regular

Extreme Service Couplers are coated in rubber and can be used in CO2 and H2S environments.

### Tubing Collars

Part Number	Size	OD	Steel Type
TK-2875	2 7/8"	4 3/4"	J55 EUE Tubing Collar
TK-35	3 1/2"	5 3/8"	J55 EUE Tubing Collar
TK-45	4 1/2"	8 1/2"	J55 EUE Tubing Collar
TK-55	5 1/2"	8 1/2"	LTC Tubing Collar



We have the capability to custom coat any size of tubing collar to assist in the reduction of vibration and premature tubing breaks caused by harmonic resonance. Coated tubing collars are also used when producing a well through the tubing.

**WESTERN POLYMERS LTD.**

Bay A, 1003 55th Avenue NE, Calgary, AB, Canada

Phone: 403-295-7194 Fax: 403-295-7194 Toll Free: 1-888-295-7353

[www.westernpolymers.com](http://www.westernpolymers.com)